

### PART II PLAN ELEMENTS

**Note**  
Unless otherwise noted, data source is the 2000 US Census.

#### ISSUES AND OPPORTUNITIES

**Introduction**  
The purpose of this section is to present the existing population, housing, agricultural, and economic conditions that help define the Town of Spring Brook. In addition, projections of future population and housing demands have been created. General trends in the agricultural community are also discussed. Understanding these factors is the first step in developing the land use plan for the Town of Spring Brook.

**Brief history of current land use planning endeavors**  
The Town of Spring Brook approved its comprehensive land use planning initiative at the Dec. 9, 2002 board meeting. This action was undertaken in response to the passage of the Comprehensive Planning Law, 66.1001, by the Wisconsin legislature and the availability of cost sharing funds to support the planning efforts prescribed by that legislation. After several public meetings, the Town Board chairman selected a plan commission and that commission was sworn in and had its first meeting on Dec. 16, 2002. Since that time, the Spring Brook Plan Commission has had an open monthly meeting on the 4th Tuesday of the month at 7:30 PM at the Town Hall in Spring Brook. The plan commission meetings are posted in several locations (e.g. at the town hall) and in the Dunn County Reminder and Dunn County News newspapers. The plan commission has sought community input through several other forums including visioning sessions on March 22 and April 12, 2003, an open house on Sept. 11, 2003 and a Citizens opinion survey sent out in the spring of 2003. Response on the survey was particularly good with 419 surveys returned.

- Basic Objectives**
- Document public participation
  - Identify key issues and opportunities that the plan revolves around
  - Research selected trends in the local economy and demographics
  - Generate population projections

**Key survey results**  
The citizen opinion survey and the entire survey analysis are in Appendix B.

**Key issues and opportunities, including possible conflicts**  
Population growth and conversion of farmland to residential or other commercial use appears to be the most significant source of conflict identified in the survey by this commission. Balancing the rights of current owners to use commercially, or profit from the sale of their property while not adversely affecting remaining residents and owners with the subsequent development is the conflict the commission will need to focus its recommendations on.

#### EMPLOYMENT CHARACTERISTICS

**Township Employment Characteristics and Projections**  
See Economic development / Local Employers



#### EDUCATION CHARACTERISTICS

##### School Enrollment

Subject	Town of Spring brook		Dunn County	
	Number	Percent	Number	Percent
Population 3 years & Over in school	388	100.0	14,115	100.0
Nursery school, preschool	22	5.7	543	3.8
Kindergarten	18	4.6	496	3.5
Elementary (grades 1-8)	183	47.2	4,261	30.2
High school (9-12)	109	28.1	2,358	16.7
College or graduate school	56	14.4	6,457	45.7

##### Educational Attainment

Subject	Town of Spring Brook		Dunn County	
	Number	Percent	Number	Percent
Population 25 years & over	835	100.0	22,644	100.0
Less than 9 <sup>th</sup> grade	18	2.2	1,161	5.1
9-12, no diploma	58	6.9	1,862	8.2
High school graduate (includes equivalency)	339	40.6	8,353	36.9
Some college, no degree	191	22.9	4,621	20.4
Associate degree	86	10.3	1,875	8.3
Bachelor's degree	94	11.3	3,120	13.8
Graduate or professional degree	49	5.9	1,652	7.3
High school graduate or higher		90.9		86.6
Bachelor's degree or higher		17.1		21.1

#### POPULATION CHARACTERISTICS

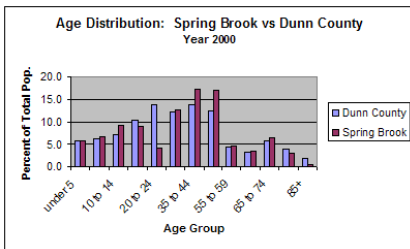
Population change is the primary component in tracking a community's growth and in predicting future trends and needs. Change in population affects all aspects of a community: recreation, transportation, agriculture, housing needs, and all community services. In 2000 the Town of Spring Brook had 223 single, 687 married, 75 divorced, and 28 widowed people.

**POPULATION PROFILES**

**Gender and Age**

	Town of Spring Brook 1990		Town of Spring Brook 2000		Dunn County 2000	
Total Population	1,297		1,320		39,858	
Subject			Number	Percent	Number	Percent
Male	671	51.7	692	52.4	20,094	50.4
Female	626	48.3	628	47.6	19,764	49.6
Under age 5	113	8.7	76	5.8	2,285	5.7
5-9 years	116	8.9	90	6.8	2,415	6.1
10-14 years	100	7.7	124	9.4	2,844	7.1
15-19 years	69	5.3	120	9.1	4,175	10.5
20-24 years	96	7.4	55	4.2	5,496	13.8
25-34 years	216	16.7	168	12.7	4,817	12.1
35-44 years	189	14.6	227	17.2	5,444	13.7
45-54 years	129	9.9	226	17.1	4,988	12.5
55-59 years	48	3.7	60	4.1	1,689	4.2
60-64 years	45	3.5	44	3.3	1,230	3.1
65-74 years	89	6.9	87	6.6	2,231	5.6
75-84 years	68	5.2	38	2.9	1,569	3.9
85 years & older	19	1.5	5	0.4	675	1.7
Median age			36.2		30.6	

There were 1,320 residents in the town of Spring Brook with the distribution listed in **Gender and Age**. The township population has slightly more men than women, while the county is more evenly split. By age, the township and county seem to be distributed the same.



**Age (2000 Census)**

The Town of Spring Brook had a median age of 36.2 years in 2000. The Dunn County median age was 30.6 years in 2000. Dunn county's population distribution is partly influenced by the presence of the University of Wisconsin-Stout, which introduces a significant number of people ages 18 to 25 to the distribution. Similarly, the loss of college-aged persons is evident in Spring Brook's population distribution.

In 2000 Spring Brook had 234 people 55 or older (17.7%). Dunn County, as a whole, had 7394 persons aged 55 and older (18.6%). The ages of the population may have an impact on the services provided by the Township.

**Minority Population in Dunn County**

	1980	1990	2000
Black	175	175	135
American Indian	190	195	107
Asian	125	640	849
Hispanic	175	105	335
Other	110	180	148
Two or More Races			320

**Minorities (U.S. Census, 2000)**

The town of Spring Brook has a very small minority population (1.1%) that has grown more slowly than the minority populations of Menomonie City or of Dunn County. Over the past ten years the minority population in Dunn County has increased from three to four per cent. The state has a minority population of 11%, and the nation has a minority population of 24.9%. The largest segment of the Dunn County minority population is the Asian community, while Spring Brook's small minority population is primarily Hispanic.

**Historical Population Counts**

1950	1960	1970	1980	1990	2000
1,174	1,169	1,168	1,293	1,293	1,320

Source: West central regional Planning

**Population**

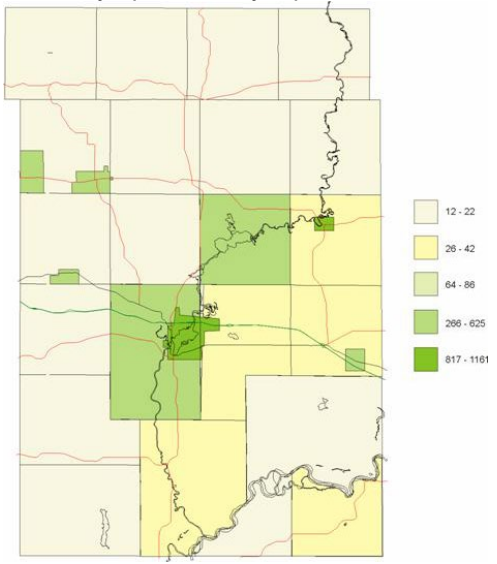
Changes

	1990	2000	Total Numeric Change	Total Percent Change
Town of Spring Brook	1,293	1,320	27	1.02
Dunn County	35,909	39,858	3,949	11.10
Menomonee	13,547	14,937	1,390	11.03
Wisconsin	4,891,769	5,363,675	471,906	10.96

Population density

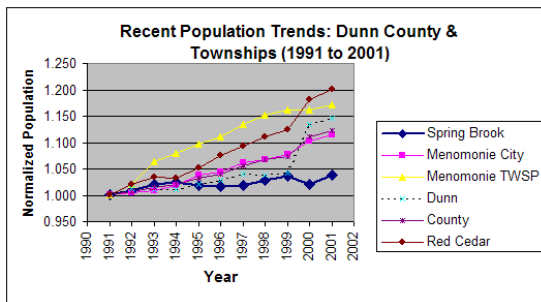
Selected Townships	2000 Population	Density/square mile
Town of Menomonee	3174	76
Tainter	2116	64
Red Cedar	1492	41
Dunn	1367	24
Rock Creek	793	26
Elk Mound	1121	33
Sherman	748	21
Spring Brook	1320	22
Tiffany	633	21
Colfax	909	27
Weston	630	15
Grant	426	12
Peru	247	13
Otter Creek	474	13
Dunn County	39858	46.8

Dunn County Population Density Graphic



Population Trends

The town of Spring Brook is the 6<sup>th</sup> most populous political entity in Dunn County, representing 3.3% of the county's population. According to the 2000 Census, there are 1320 people living in the town of Spring Brook. Since 1970, the population in our town has grown more slowly than the population of Dunn County (13% increase in 30 years, vs 37.5% for the county as a whole). Dunn county growth characteristics are dominated by the largest population center--the city of Menomonee--and population upturns of Menomonee's nearest lying neighbors. In the year 2000 the population forecast for 2015 for Spring Brook was 1492, an increase of 13%--though the forecast misses the actual population for 2000 by 61 (1320 actual, 1381 predicted). Based on trends in townships between Spring Brook and the city of Menomonee, Spring Brook could be challenged by a wave of development and corresponding population growth originating in the city of Menomonee. This development has resulted in population growth discontinuities in Dunn Township and Red Cedar Township between 1999 and 2000. The Town of Spring Brook has a population density of 21.7 people per square mile, compared with an average for Dunn County of 46.8 people per square mile.



**Population Projections**

	2000	2010	2020
	1,396	1,514	1,643

Source: West Central regional Planning

	2000	2005	2010	2015
	1,381	1,427	1,458	1,492

Source: State of Wisconsin



Population projections from both, West Regional Planning and the State of Wisconsin, were made back in 1990. Comparing those projections to actual 2000 data indicates that the population is increasing but, at a slightly lower rate than was originally projected.

**Population & Growth**

Population Growth, U.S. Census Data					
	1970	1980	1990	2000	2015*
<b>Dunn County</b>	28991	34314	35909	39858	42007
		18.4	4.6	11.0	5.4*
<b>Spring Brook</b>	1168	1293	1293	1320	1492
		10.7	0	2.1	13.0*

\* these growth rates are based on change from actual population in 2000 to projected population in 2015. ♦ Projected pops. in 2000 were 38477 and 1381, respectively, resulting in growth rates of 9.2% and 8.0%, for Dunn County and Spring Brook Town, respectively.

**Summary**

Assuming that there are no major changes, the data indicates that the Town of Spring Brook will continue to grow at a rate slower than that of the county as a whole. ♦ Growth around the city of Menomonie, as well as Eau Claire and the Twin Cities Metropolitan area, could change the growth pattern of Spring Brook, but that is speculative, rather than based on past growth patterns of the township.